



BHSEA Secretary Vacancy

Sharing > Learning > Improving
Construction Matters Newsletter
March 2021

Main theme

8 March Webinar Presentations

> Introduction

> Hazard Spotting

> Main Topic

> Toolbox

> Information

> Next Event(s)

Members' Corner

COVID-19: 'Site Operating Procedures' & Ecourse: Operating a Safe Construction Site
Sarah Duignan & Trevor Oakley , CITB

Construction Health Inspection Initiative
 Alastair Mitchell, HSE

Building Safety Regulator - Update
 Alastair Mitchell, HSE



07881 290238 secretary@bhsea.org.uk www.bhsea.org.uk



Introduction to March Webinar

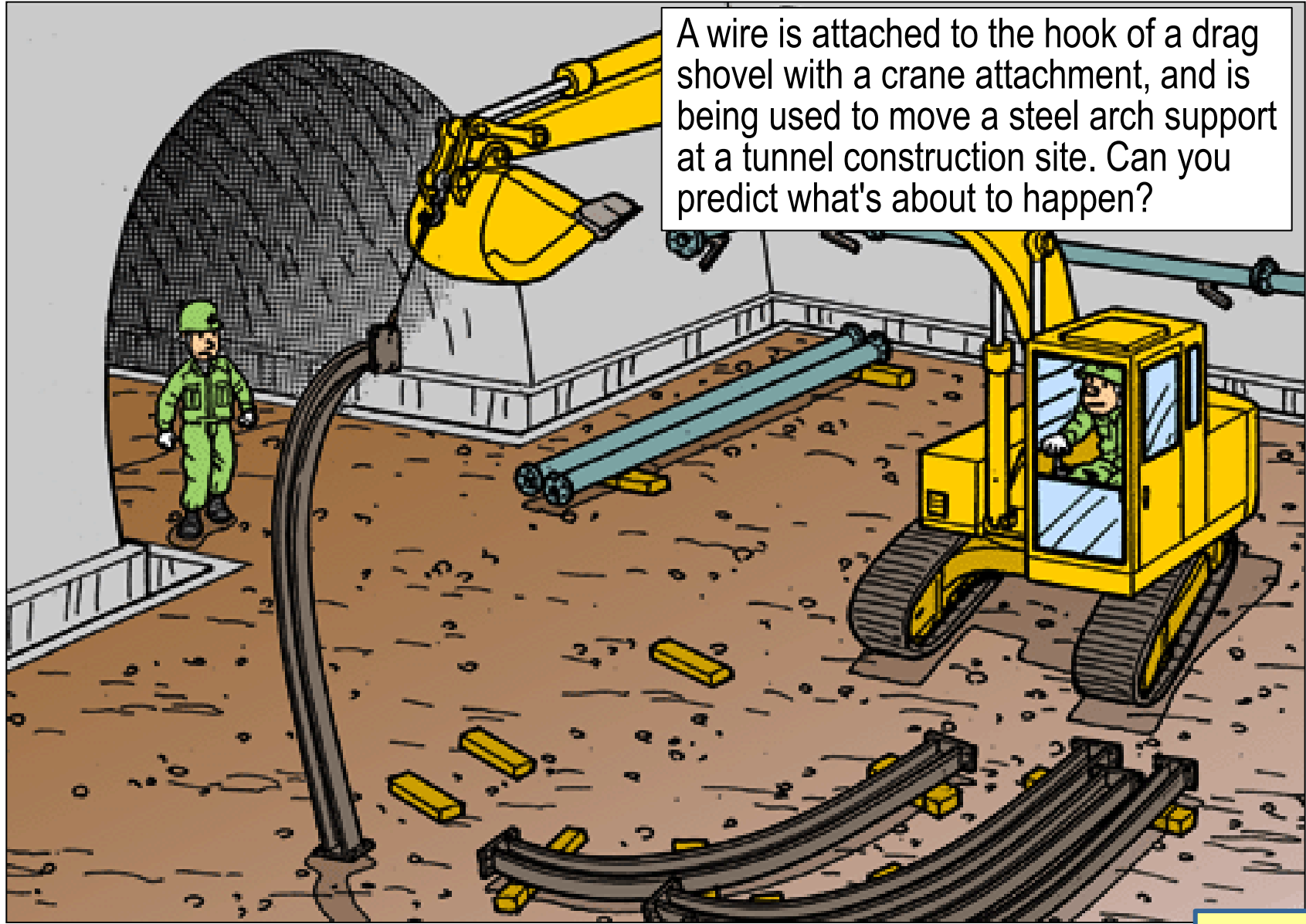


- A warm welcome - members, guests, new members, new attendees
- Re-commencement of face-to-face events sometime this year - we hope
- New website - delayed but coming this year

George Allcock – BHSEA Chair 8 March 2021

Attendees

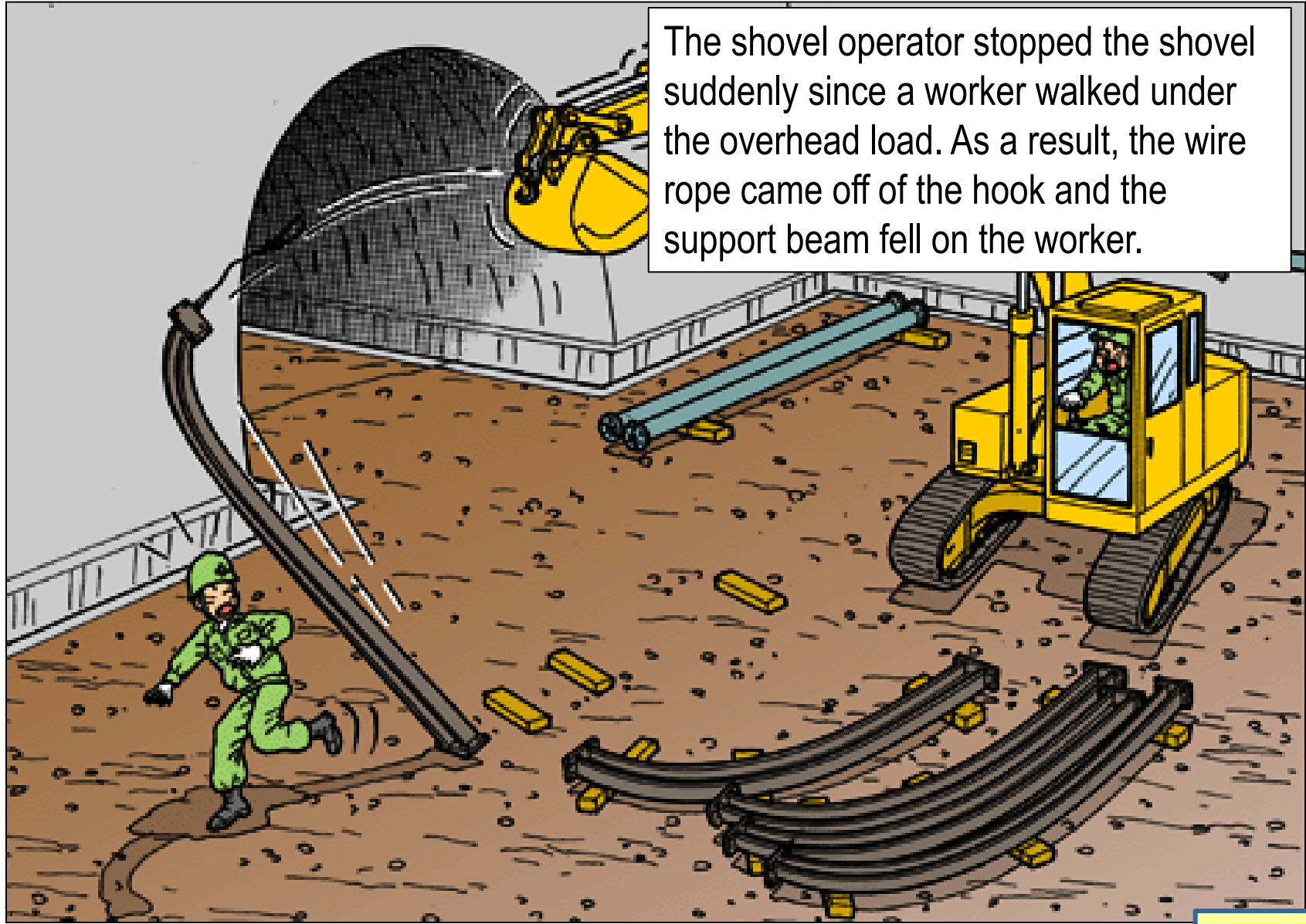
- | | | | | |
|--------------------------|----------------------------------|------------------|-------------------|------------------|
| Elizabeth Prophett(Host) | Tony Bakewell | Wayne Bingham | Steve Parton | Kashmir Bucior |
| Mark Hoare | Mark_Britten | Louise Mansfield | John Jacobs | Jack Stevens |
| Sarah Duignan | nboon | Linda Ley | Jon Glanvill | Phil Smith |
| Trevor Oakley | Wayne.Bishop | Sadie Bryan | User | CLewis |
| peter | David Price | Stuart McLean | Trudy Whittingham | Matthew.W-Stokes |
| Alastair Mitchell | J Anderson | Paula's iPhone | Julie Earles | Scott Paterson |
| ronm | Jayne | Mark Godfrey | Jake Sansom | Matt Pickett |
| georg | Jeff Hurlock | Sarah Ough | Nick Prescott | Andrew 's iPad |
| SPM | Camilla | pam.ward | Ralph -Arrelle | Jolie Taylor |
| Nina Fairweather | Mark | Paul Cartwright | kevin horton | Donald Harvey |
| phil | Richard Archer - Makita (UK) Ltd | hani | Danny Blackhurst | jim curran |
| | Chris.Morgan | Andy Royle | philiplatham | Rosi Edwards |



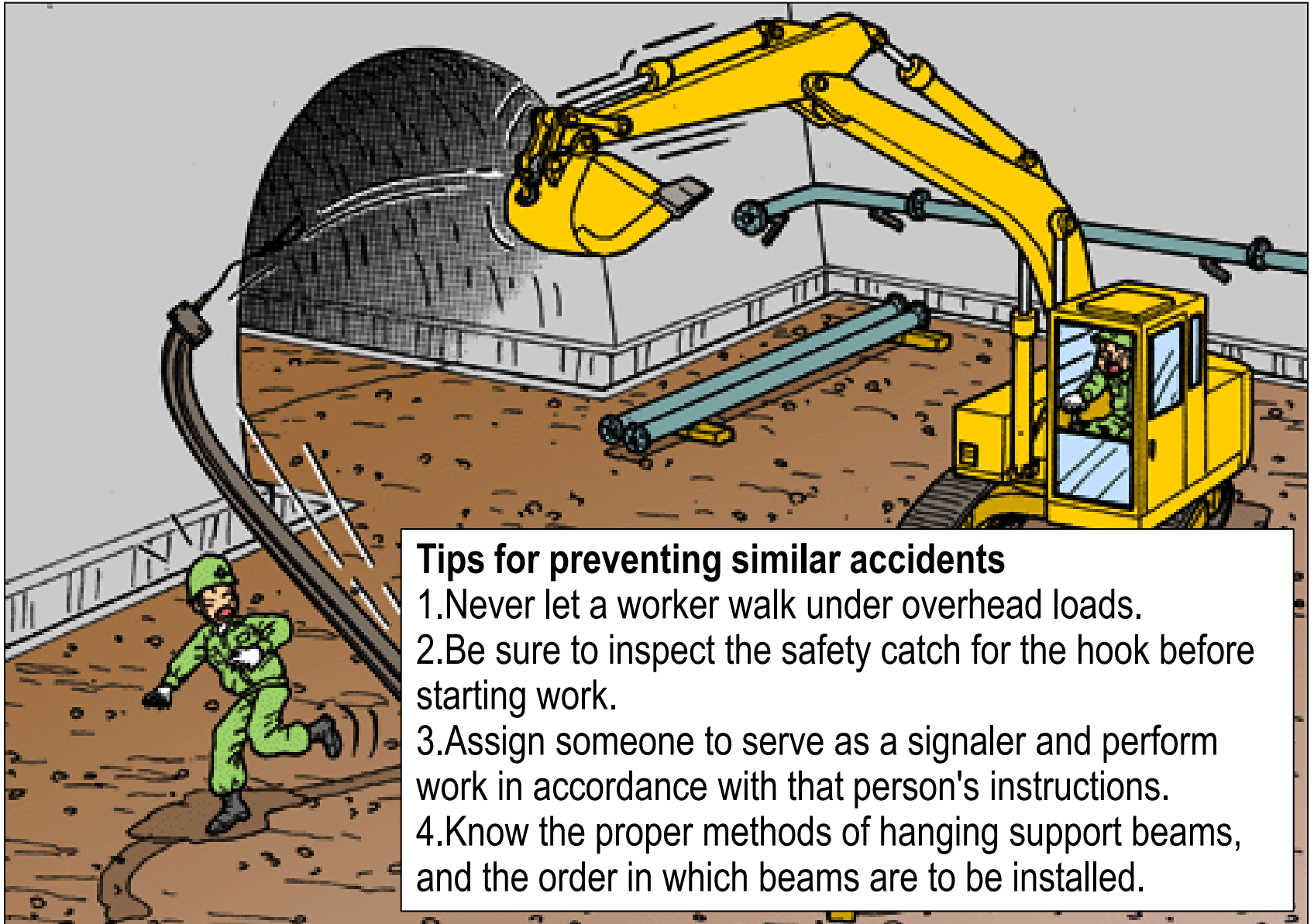
A wire is attached to the hook of a drag shovel with a crane attachment, and is being used to move a steel arch support at a tunnel construction site. Can you predict what's about to happen?



The shovel operator stopped the shovel suddenly since a worker walked under the overhead load. As a result, the wire rope came off of the hook and the support beam fell on the worker.



From Japan International Center for Occupational Safety and Health



Tips for preventing similar accidents

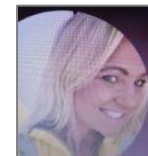
1. Never let a worker walk under overhead loads.
2. Be sure to inspect the safety catch for the hook before starting work.
3. Assign someone to serve as a signaler and perform work in accordance with that person's instructions.
4. Know the proper methods of hanging support beams, and the order in which beams are to be installed.



Members' Corner

COVID-19: 'Site Operating Procedures' & eCourse Setting Up and Operating a Safe Construction Site

Sarah Duignan & Trevor Oakley, CITB



Extracts

Sarah Duignan & Trevor Oakley
CITB Advisor
Birmingham and The Marches & Worcestershire
sarah.duignan@citb.co.uk

CITB

Our Mission: To attract and support the development of people to construct a better Britain

Our Vision: For British construction to have a recognised, world-class, innovative approach to developing its workforce to deliver quality in the built environment.

CC04 COVID 19 - Weekly site operating procedures checklist

An interactive checklist, designed to ensure on-going compliance with both established and additional procedures.

Download: [CC04: COVID-19 – Weekly site operating procedures checklist \(PDF file, 1MB\)](#)

CC02 COVID 19 - Health, safety and environmental risk assessment template

A guide offering example control measures for those required to undertake risk assessment of the workplace and specific activities on site. An interactive risk assessment template is also included in order to facilitate this process.

Download: [CC02 COVID-19 - Health safety and environmental risk assessment template \(PDF file, 1MB\)](#)



Go to slides on BHSEA website for lots of useful and practical information, forms, checklists and a FREE training course

Link to presentation slides / website



Construction Health Inspection Initiative

Alastair Mitchell, HSE



Extracts


HSE plan for construction – our priorities



- Supporting small businesses to achieve improved risk management and control
- Reducing incidents of ill health, with a particular focus on occupational lung disease and musculoskeletal disorders
- Embedding the principles of CDM 2015 with all duty holders
- Set out in the Sector plan for Construction



Covid-19 spot checks in construction:



- Since start of pandemic CD have carried out 4089 spot checks (3543 as site visits)
- 53% of visits - no further action required – appropriate measures in place
- 47% of visits – some form of action required from verbal advice to enforcement notices
- Overall approach has been to secure control by working collaboratively with duty holders
- 101 enforcement notices issued – most common defects relate to inadequate cleaning regimes, social distancing, and/or management arrangements

Silica - key non-compliance themes:



- Most related to cut-off saw or angle grinder on bricks, blocks, concrete, roof tiles, flags etc.
- Tool used with water suppression missing / inadequate
- RPE: none provided, the wrong type and / or lack of face fitting
- Others related to breaking, chasing and dry sweeping





Building Safety Regulator - Update

Alastair Mitchell, HSE

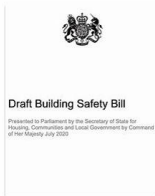


Extracts



Building Safety Regulator

Alastair Mitchell – HM Inspector of Health and Safety, Construction Sector, HSE.



What can you do to prepare?

Existing buildings



- Think now about your fire and structural risks and how to manage them
- Are those working in safety critical roles competent, do they have the right skills, knowledge, experience and behaviours required?
- Collect the information you need to demonstrate your approach to the management and control of risk
- Consider performance measures so you know how you're doing
- Review your resident engagement strategy

BSR objectives

- The Building Safety Regulator will ensure buildings are safe so tragedies like that at Grenfell Tower do not happen again
- Provide independent, risk-based assurance of the design, construction and occupation of higher risk buildings
- Re-establish confidence in the system so that residents **are safe - and feel safe** - in their homes.



[Link to presentation slides / website](#)



Hierarchy of Controls



Elimination to avoid the hazard completely e.g. stopping the activity



Substitution i.e. replacing with something less hazardous or easier to control



Engineering solutions to isolate, separate, reduce or control exposure to hazards

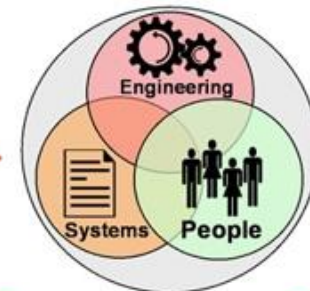


System solutions e.g. 'safe procedures' so that circumstances which arise can be dealt with in a correct & safe way i.e. people know what to do.



People / behavioural solutions (incl PPE) so that hazards & risks are known & correct / safe behaviour is the norm i.e. "the way we do things round here"

Referred to as
'Hierarchy of Controls'



The most common & usually in combination



Washing / Washing Facilities



Could reproduce /
copy this poster
and add your own
message



'...are there wash basins, hot and cold (or warm) running water, soap and towels?'



Received
11/03/2021

Keep your COVID-19 risk assessment up to date

Every workplace should have a COVID-19 risk assessment that is regularly reviewed as circumstances change.

For everything you need to consider and the actions you should take to control the risks and prevent the spread of the virus, [watch this short video](#).

Advice and an example assessment are [available at our COVID risk page](#).





Received
11/03/2021

[Updated advice on talking with your workers about preventing coronavirus](#)

The law says you must consult with your workers about reducing risks from coronavirus in your workplace.

HSE has updated its guidance to help you have conversations with your workforce about providing support and keeping control measures in place.

Talking to your workers means you can explain changes you're making to keep the workplace COVID-secure and continue to run your business safely. It also gives workers the chance to:

- tell you if they're worried about any workplace risks
- influence decisions about health and safety

HSE has converted this advice to web pages so it is easier for people to find the information they need and we have expanded the guidance to include more advice on:

- supporting higher-risk groups
- returning to the workplace
- ventilation and air conditioning
- stress, mental health and wellbeing

[The updated guidance](#) will help you keep in touch with workers and support them as restrictions are eased in the coming months.



[COVID-19 guidance and updates](#)

Received
11/03/2021

HSE continues to publish the latest coronavirus-related guidance and information, as well as updating previously published content.

For a full range of COVID-related information and advice visit our [coronavirus pages](#). This includes:

- [Ventilation and air conditioning](#)
Adequate ventilation (including air conditioning) can help reduce risk of spreading coronavirus
- [Protecting home workers](#)
Advice on lone working without supervision, display screen equipment and stress
- [Hand sanitiser and surface disinfectants](#)
Guidance for employers who are providing hand sanitiser for their workers and others to use in their workplaces



[Webinar on COVID-19: Science and evidence](#)

Received
11/03/2021

Join HSE's Chief Scientific Adviser for a free webinar on COVID-19 environmental transmission and modelling.

Along with his SAGE-EMG co-chairs, Professor Catherine Noakes OBE and Professor Harry Rutter, Professor Andrew Curran (pictured) will lead the discussion on how science is helping to improve understanding of the risks of transmission in workplaces and other settings.

[Book your free place](#) for the webinar on **Tuesday 16 March 2021 at 12pm–1.30pm.**

For further information on HSE's scientific evidence and research on COVID-19, visit our [coronavirus webpage](#).





BHSEA Secretary – Vacancy

After being in post for over nine years the current Secretary Liz Prophett is looking to start winding down during the current year, possibly running into 2022.

We are therefore seeking to recruit a new person into the role ASAP with something like a three month lead in.

The Role: To provide the Association with a self-employed contract service. Fulfilling the various tasks, including the key ones listed below, will require an average of 20 – 30 hours / week, with opportunity for great flexibility rather than fixed hours. A generous rate (circa twice the Minimum Hourly Rate) is paid together with a working from home allowance; laptop computer, mobile phone, and other equipment as may be necessary, will be provided.

Key Tasks are to:

- Administer the day-to-day running of the Association, liaising with the Chair / trustees as necessary.
- Support Council, Management and Honorary Officers (Trustees) in achieving the Association's charitable aims.
- Produce BHSEA Annual Programme of Events and help compile a list of Construction / WWT events.
- Develop/organise/arrange BHSEA events including virtual events, liaising with speakers and event venue staff.
- Produce a monthly Newsletter and issue electronically.
- Administer BHSEA website including Membership database and subscriptions.
- Organise Council, Management & Construction Committee meetings – prepare agendas, take minutes, etc.
- Manage and monitor BHSEA and Construction/WWT bank current accounts – income and expenditure.
- Liaise with BHSEA accountants in the administration of BHSEA finances.
- Promote the further development and simplification of policies, procedures and guidance.
- Gather information and assist in producing BHSEA Annual Report & Accounts.

To express an interest or to find out more, please contact either:

Liz Prophett

Email: secretary@bhsea.org.uk

Tel: 07881290238

George Allcock

Email: george.allcock@hotmail.co.uk

Tel: 01564 703664




Programme of Events 2021

BHSEA Birmingham Health, Safety & Environment Association
A forum that helps to protect people & safeguard your business

Introduction & Programme of Events 2021

Aiming to make health and safety
Simple Visual Practical



By courtesy of Black Country Living Museum

Talk to us: ☎ 07881 290238
Contact us: ✉ secretary@bhsea.org.uk
Visit us: 🌐 www.bhsea.org.uk
Follow us: 📺

Registered Charity: No. 255523

Sharing > Learning > Improving >

Main Themes →

- 11 Jan: AGM; HSE Keynote**
- Alan Craddock, Head of Operations, HSE
 - 08 Feb: HS&E: Use of Technology and Social Media**
- Ralph Weaver, Arrelle; Julian Taylor & Becky Thomas, SHE Software
 - 08 Mar: Construction Matters: Health Inspections, WWT & Building Safety Regs** - Alastair Mitchell, HSE
COVID Checklists & Forms- Sarah Duignan, CITB
 - 19 Apr: Health, Welfare and Wellbeing in Practice**
- Nick Pahl, Society of Occupational Medicine;
Victoria Field, Peritus Health Management;
Katharine Metters, Posturite.
 - 10 May: Behaviour Based Safety**
 - 14 Jun: Legal Update, including Case Law, & Refresher**
- HSE and Pinsent Masons
 - 13 Sep: Duty to Maintain - EHS Compliance Tool**
 - 11 Oct: Construction Matters: Sandwell Aquatics Centre Update / Experience**
 - 08 Nov: Fire and Security Risk Management**
 - 13 Dec: Members Challenges and Achievements – What, why and how**
- 🔑 *Further details on the website and via flyers*



A weekly chat with no fixed agenda

Everyone Welcome



Take a break



An invitation to **zoom** to **LIZ'S COFFEE LOUNGE**

open every Wednesday 10.00 – 11.00

Come on in at anytime and leave whenever you wish

No particular agenda, simply anything you wish to talk about, ask about or share



A warm welcome awaits

Reminder of chatting and networking in earlier times





Everyone welcome

Sharing > Learning > Improving
Health, Welfare & Wellbeing Webinar
 19 April 2021 13.30 – 14.45

Main theme

- > Introduction
- > Hazard Spotting
- > Main Topic
- > Toolbox
- > Information
- > Next Event(s)

Members' Corner
Supporting Menopause in the Workplace & beyond
 Linda Ley, BHSEA Management Committee member

Mental health for Small Businesses
 Nick Pahl, Society of Occupational Medicine

Toolbox Talks
Occupational Health: Health Wellbeing
 Victoria Field, Peritus Health Management

**Healthy Homeworking:
 Return to Offices**
 Katharine Metters, Posturite

