



Sharing > Learning > Improving
14 September 2020
Webinar / Event - Newsletter

Links via icons or arrows

Main Theme

MACHINERY & WORK EQUIPMENT

> Introduction

> Hazard Spotting

> Main Topic

> Toolbox

> Information

> Next BHSEA & other event(s)

Machinery Safety & CE Marking

Anthony Bowmer, HSQE Manager, Make UK (formerly EEF)

Short supplement

Machinery Safety Procurement

George Allcock, BHSEA Chair



07881 290238 secretary@bhsea.org.uk www.bhsea.org.uk



Introduction



A very warm welcome to this, the first BHSEA webinar after the summer break, with a particular welcome to those from other safety groups and elsewhere.

The last event was in June, and in August we produced an additional Newsletter with a link to HSE Covid-19 guidance and a focus on practical solutions, systems and procedures.

However as we well know, policies, procedures and engineering controls are the easy part of any health and safety system. What is far more difficult is the actions and behaviours of people upon which any system ultimately depends.

How shops can apparently duck responsibility for the safety a people using their premises (e.g. the non use of face masks), and that HASAWA doesn't appear to apply, is a debate for another day.

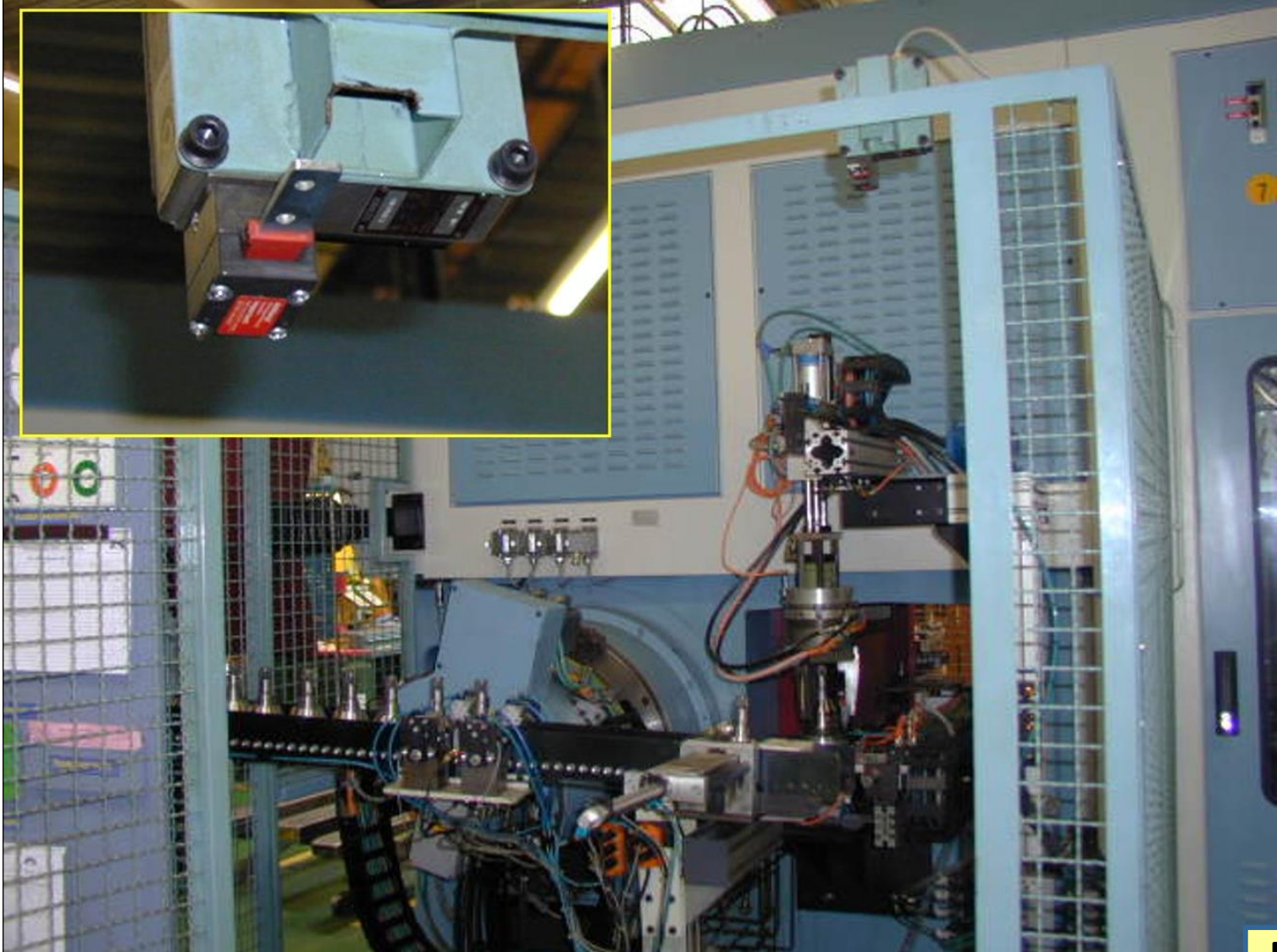
In addition to Covid-19, we still of course have all the usual and ongoing risks to deal with, not least safety of machinery and work equipment, the topic for today.

We are very pleased to welcome back to BHSEA, Anthony Bowmer from Make UK (formerly EEF) to provide a refresher and follow-up to the excellent presentation he gave in May 2018.

Finally, we hope you and your business are adapting to the new normal and that some ongoing improvements and benefits are being identified.



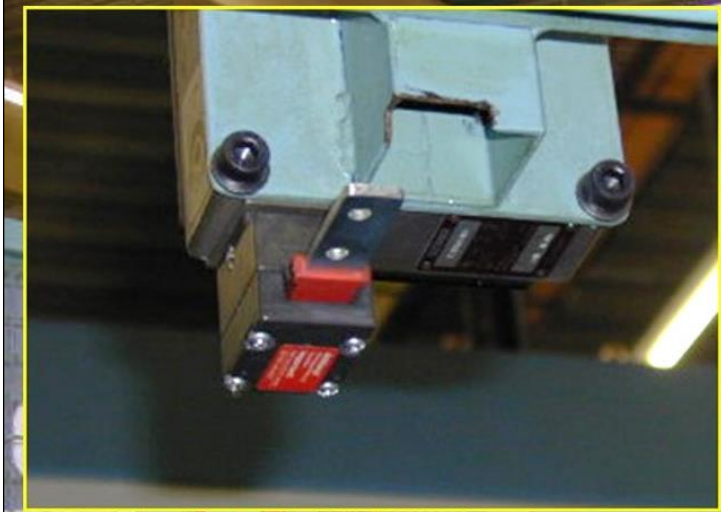
What is good or not good?



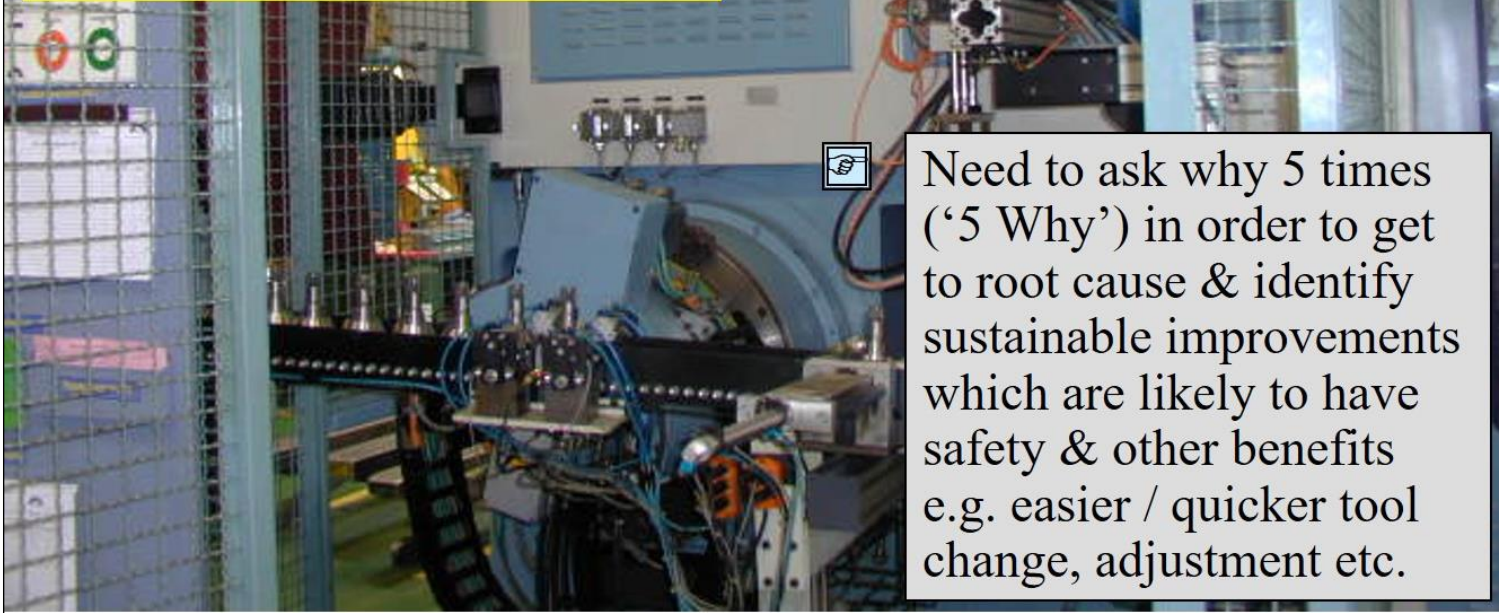
More



What is good or not good?



Safety device / switch deliberately overridden using spare switch actuator



Need to ask why 5 times ('5 Why') in order to get to root cause & identify sustainable improvements which are likely to have safety & other benefits e.g. easier / quicker tool change, adjustment etc.



Machinery & Work Equipment Safety

Anthony Bowmer, HSQE Manager, Make UK (formerly EEF)



Examples of content

UK Machinery Safety

Machinery safety in the UK is driven by two sets of Regulations:

Supply of Machinery (Safety) Regulations 2008, as amended by the Supply of Machinery (Safety) (Amendment) Regulations 2011
 these regulations require all machines placed on the market in the EU to carry a CE mark as described by the European Machinery Directive 2006/42/EC

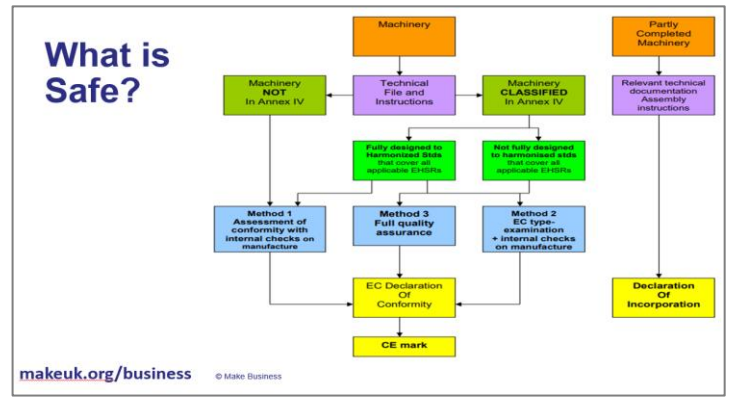
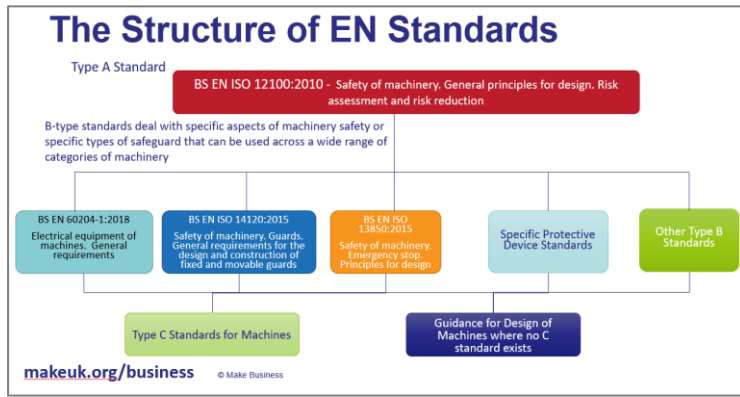
Provision and Use of Work Equipment Regulations 1998 (PUWER 98)
 these regulations place duties on people and companies who own, operate or have control over work equipment

makeuk.org/business © Make Business

Examples of EC Product Directives

- Electromagnetic Compatibility (EMC)
- Low Voltage (Safety of Electrical Equipment)
- PPE
- Equipment and Protective Systems Intended for use in potentially explosive environments
- Noise of outdoor machinery
- Lifts
- Pressure Equipment
- Simple Pressure Vessels
- Gas Appliances
- Machinery**

makeuk.org/business © Make Business



[Link to website – presentation slides](#)



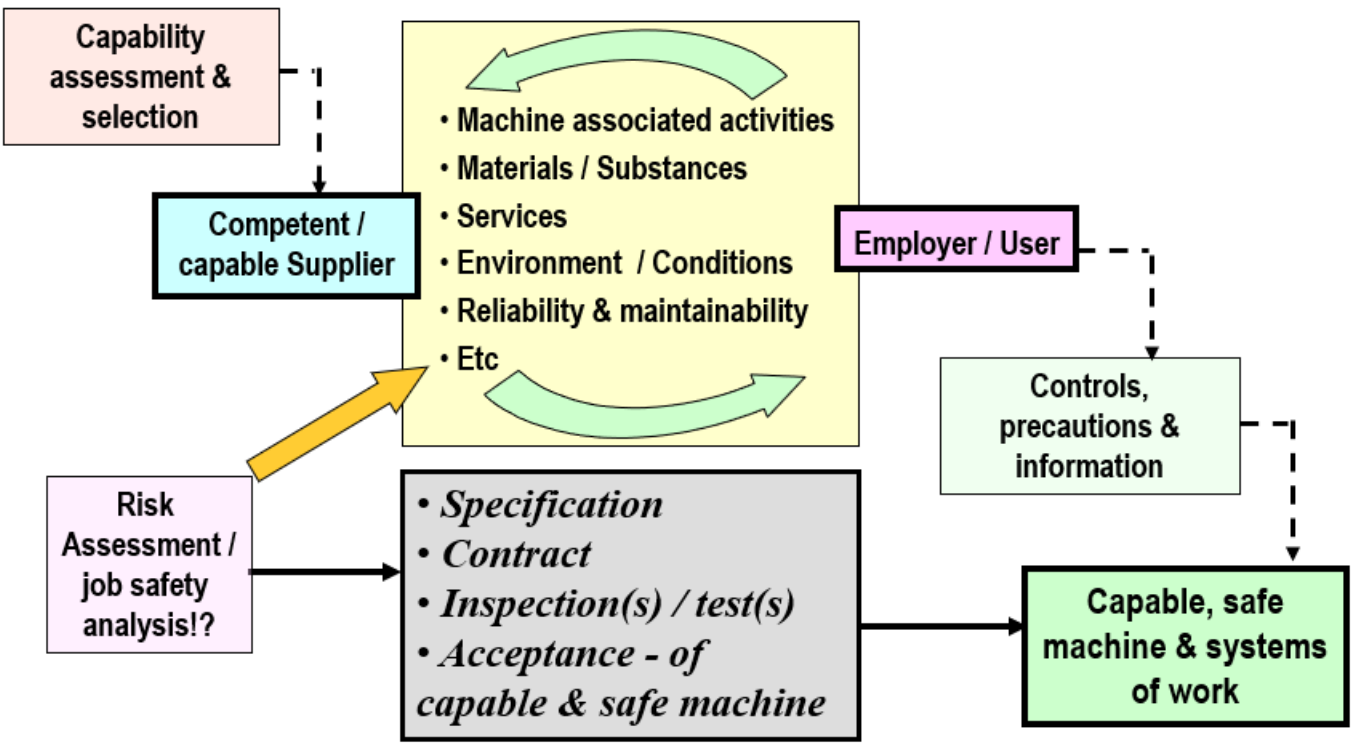
Machinery Safety: Procurement

George Allcock, BHSEA Chair (ex. GKN Group Safety Adviser)



Example of content

Procurement Overview





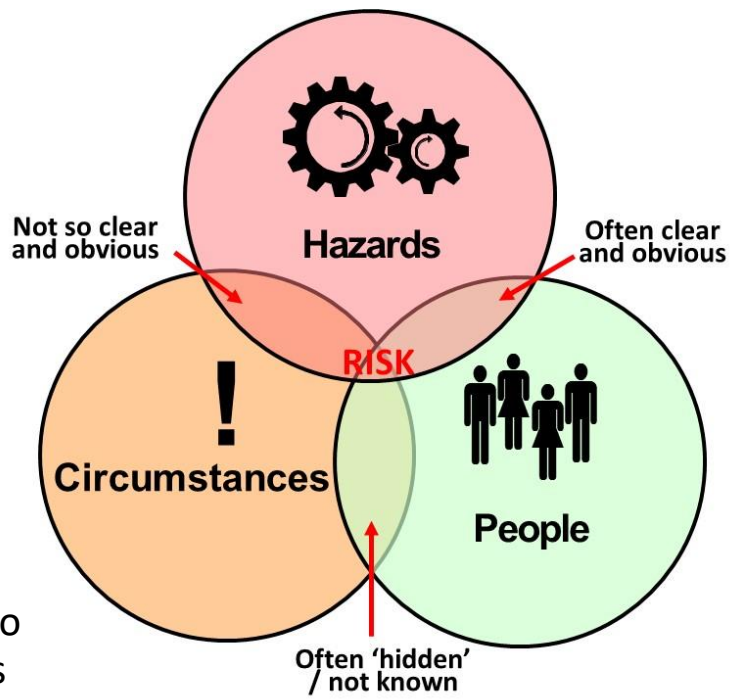
Machinery (and other) Risk Assessment - Reminder

Need to take account of

Hazards / foreseeable causes of injury or ill health

- Including hazards as a result of failures and errors

Q. Are you capturing all of these e.g. via near miss reporting?



Circumstances which may be reasonably expected to occur

- Includes things not going to plan and unexpected events

Q. How do you identify these and how do you learn from your 'events' and 'events' elsewhere?

People acting / behaving in a way they may be reasonably expected to act / behave

- People have a desire to help and try and fix things

Q. What are you doing about this and how to you engage with people?



Work equipment and machinery

Information and guidance for:

- designers and manufacturers of new products,
- suppliers and installers of work equipment,
- those purchasing and using equipment at work,
- and for looking after work equipment.

<https://www.hse.gov.uk/work-equipment-machinery/>



Are you a...?

- [User](#)
- [Purchaser](#)
- [Installer](#)
- [Supplier or Importer](#)
- [Designer or Manufacturer](#)
- [Exhibitor](#)
- [Regulator](#)
- [More roles](#)

FAQs

- [General](#)
- [Lifting](#)
- [Powered gates](#)
- [CE Marking](#)
- [Manufacturers](#)
- [Suppliers](#)
- [Installers](#)
- [Hiring out work equipment](#)
- [Purchasing work equipment](#)
- [More FAQs](#)

Resources



- [Providing and using work equipment safely: A brief guide](#)



- [Buying new machinery](#)

➤ [More resources](#)

PUWER

Select and install plant and equipment properly, use it carefully, and make sure it is maintained to meet the Provision and Use of Work Equipment Regulations 1998. [More on PUWER](#)

LOLER

Lifting equipment and lifting operations are subject to additional requirements, including periodic thorough examination, by the Lifting Operations and Lifting Equipment Regulations 1998. [More on LOLER](#)

Manufacture & supply of work equipment

By design and construction all work equipment must be safe and not give rise to risks to health when first placed on the market or put into service. [More about supplying](#)



Received
17/09/2020

Risk assessment during the coronavirus (COVID-19) pandemic

<https://www.hse.gov.uk/coronavirus/working-safely/risk-assessment.htm>

Extract

As an employer, you must protect people from harm. This includes taking reasonable steps to protect your workers and others from coronavirus. This is called a COVID-19 risk assessment and it'll help you manage risk and protect people.

You must:

- identify what work activity or situations might cause transmission of the virus
- think about who could be at risk
- decide how likely it is that someone could be exposed
- act to remove the activity or situation, or if this isn't possible, control the risk

If you have fewer than five employees, you don't have to write anything down, but it might help if you do. Find out more about [managing risk and risk assessment](#).

The Public Health England report [Disparities in the risk and outcomes of COVID-19](#) shows that [some groups of people may be at more risk](#) of being infected and/or an adverse outcome if infected. You should consider this in your risk assessment.

We have produced guidance to help you work safely (be COVID-secure) and manage the risk associated with running your business at this time.

It includes practical measures you can take, for example:

- putting in place social distancing measures
- staggering shifts
- providing additional handwashing facilities

Resources

- ▶ [Working safely during the coronavirus pandemic - a short guide \(PDF\)](#)
- ▶ [Talking with your workers about working safely during the coronavirus pandemic \(PDF\)](#)
- ▶ [What to include in your COVID-19 risk assessment \(PDF\)](#)

Related content

- ▶ [Managing risk and risk assessment at work](#)



More



Received
17/09/2020


What to include in your COVID-19 risk assessment

Below is one page / example of various hazards to deal with. To see more go to:

Extract

<https://www.hse.gov.uk/coronavirus/assets/docs/risk-assessment.pdf>

What are the hazards?	Who might be harmed and how?	Controls	What further action do you need to consider to control the risks?	Who needs to carry out the action?	When is the action needed by?
Getting or spreading coronavirus by not washing hands or not washing them adequately	Workers Customers Contractors Drivers coming to your business Drivers going out for your business Visitors	<p>Follow our guidance on cleaning, hygiene and hand sanitiser</p> <ul style="list-style-type: none"> - Provide water, soap and drying facilities at wash stations - Provide information on how to wash hands properly and display posters - Based on the number of workers and the number of people who come into your workplace decide: <ul style="list-style-type: none"> ➢ how many wash stations are needed ➢ where wash stations need to be located You may already have enough facilities - Provide hand sanitiser for the occasions when people can't wash their hands - There's a legal duty to provide welfare facilities and washing facilities for visiting drivers - You should talk to managers at any sites your drivers are visiting to ensure they are provided with hand washing facilities 	<ul style="list-style-type: none"> - Put in place monitoring and supervision to make sure people are following controls - Put signs up to remind people to wash their hands - Provide information to your workers about when and where they need to wash their hands - Identify if and where additional hand washing facilities may be needed - If people can't wash hands, provide information about how and when to use hand sanitiser - Identify how you are going to replenish hand washing/sanitising facilities - Make sure people are checking their skin for dryness and cracking and tell them to report to you if there is a problem 		

More 



Received
17/09/2020

Legionella risks during the coronavirus pandemic

https://www.hse.gov.uk/coronavirus/legionella-risks-during-coronavirus-outbreak.htm?utm_source=govdelivery&utm_medium=email&utm_campaign=coronavirus&utm_term=legionella&utm_content=digest-17-sep-20

Extract

Employers, the self-employed and people in control of premises, such as landlords, have a duty to protect people by identifying and controlling risks associated with legionella.

If your building was closed or has reduced occupancy during the coronavirus (COVID-19) pandemic, water system stagnation can occur due to lack of use, increasing the risks of Legionnaires' disease.

You should review your [risk assessment](#) and manage the legionella risks when you:

- reinstate a water system or start using it again
- restart some types of [air conditioning units](#)

If the water system is still used regularly, maintain the appropriate measures to prevent legionella growth.

You can find out what Legionnaires' disease is, where it comes from, how people get it and symptoms and treatment by reading our guidance [What is Legionnaires' disease?](#)

Content

- [Hot and cold water systems](#)
- [Cooling towers and evaporative condensers](#)
- [Air conditioning units](#)
- [Commercial spa pools and hot tubs](#)
- [Methods of control](#)
- [Changing control methods: risks to operators](#)
- [Personal protective equipment \(PPE\) required for cleaning water systems](#)
- [Getting specialist help](#)

More 



Received
17/09/2020

Using PPE at work during the coronavirus pandemic

https://www.hse.gov.uk/coronavirus/ppe-face-masks/index.htm?utm_source=govdelivery&utm_medium=email&utm_campaign=coronavirus&utm_term=ppe-rpe&utm_content=digest-17-sep-20

Extract

Employers must protect workers from injury or harm to health which could happen as a result of work-related activity. This includes taking reasonable steps to protect your workers and others from coronavirus (COVID-19).

During the pandemic, HSE has worked with others to develop guidance about current issues with PPE (personal protective equipment).

- [PPE in health and social care work](#)
- [PPE in non-healthcare work](#)

PPE in health and social care work

[Sources of advice](#)

Guidance for employers and workers in health and social care

[Fitting respirators](#)

Fit testing face masks for healthcare workers

[Using disposable respirators \(PDF\)](#)

Poster

PPE in non-healthcare work

[Guidance and sources of advice](#)

For employers and workers in non-healthcare work

[Supply issues with PPE and working safely](#)

PPE supply issues and how to manage them

More



Received
24/09/2020

Protect home workers

Coronavirus (COVID-19): update

https://www.hse.gov.uk/toolbox/workers/home.htm?utm_source=govdelivery&utm_medium=email&utm_campaign=coronavirus&utm_term=wfh-headline&utm_content=digest-24-sep-20

Extract

As an employer, you have the same health and safety responsibilities for home workers as for any other workers.

When someone is working from home, permanently or temporarily, as an employer you should consider:

- How will you keep in touch with them?
- What work activity will they be doing (and for how long)?
- Can it be done safely?
- Do you need to put control measures in place to protect them?

[Lone working without supervision](#)

[Working with display screen equipment](#)

[Stress and mental health](#)



“.....at least it’s adjustable!”



Everyone
welcome

Sharing > Learning > Improving
12 October 2020 12.45 – 14.15
Webinar / Event - Newsletter

Main Theme: **CONSTRUCTION MATTERS**

> Introduction



Members' Corner
Gas Safety
David Jenkins, Redditch Council

> Hazard Spotting



The (draft) Building Safety Bill
Sean Elson, Pinsent Masons

> Main Topic



COVID-19: Construction Sites
Spot Checks & Findings
Chris Gregory & Aaron Fisher,
Health and Safety Executive



> Information



> Next Event(s)



07881 290238



secretary@bhsea.org.uk



www.bhsea.org.uk

- Stay safe
- Stay well
- Stay alert
- Stay with the guidance
- Stay in touch



07881 290238



secretary@bhsea.org.uk



www.bhsea.org.uk